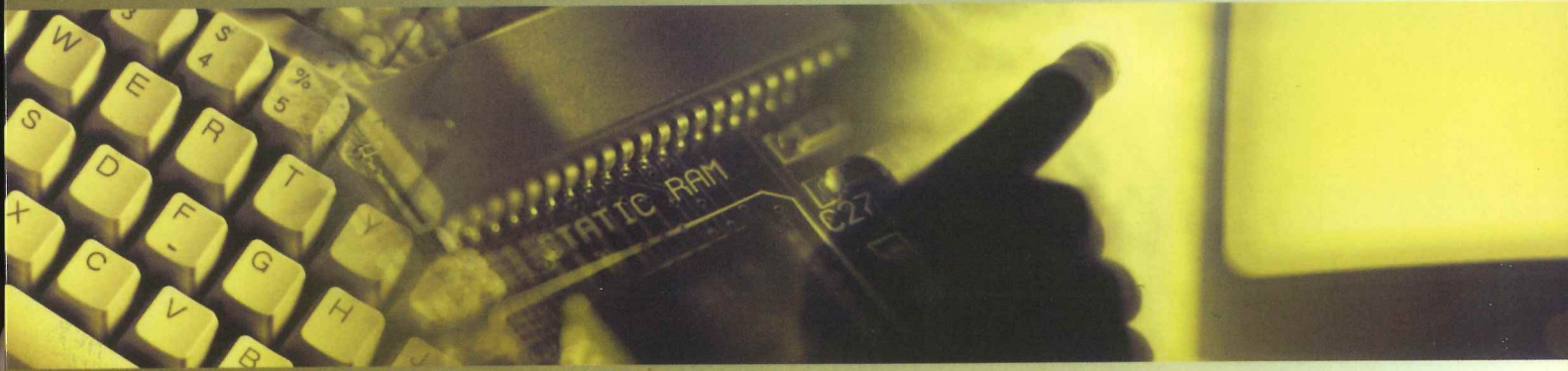
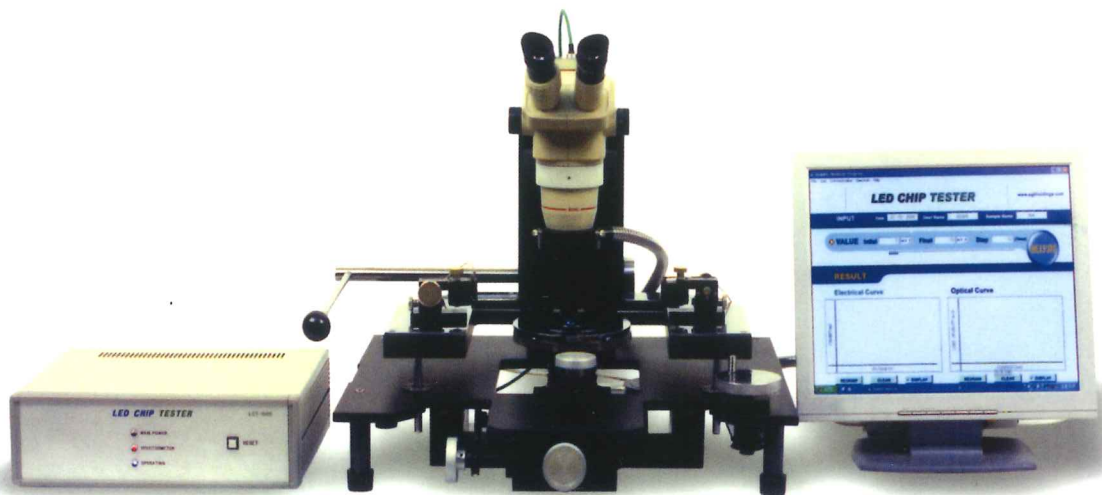


LED TESTER



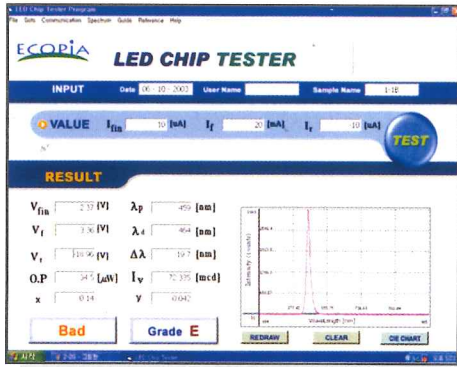
ELT-1000

LED TESTER is a useful system for testing the electrical(I-V Curve) and optical characteristics(Spectra, light Intensity) of the LED of chip, lamp, SMD



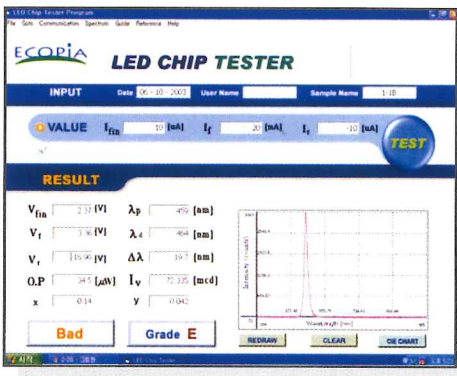
SOFTWARE

■ Elec. & optical characteristics.



- I_{fin} : Forward cut in current
- V_{fin} : Forward cut in voltage
- I_f : Forward current
- I_r : Reverse current
- V_f : Forward voltage
- V_r : Reverse voltage
- λ_p : Peak emission wavelength
- $\Delta\lambda$: Spectra line half-width
- λ_d : Dominant wavelength
- I_v : Luminous intensity
- Spectral curve: Spectral wavelength at I_f
- x, y Coordinates for white LED

■ Elec. & optical curve.



- Current-Voltage Graph
- Current-Light Intensity Graph
- 0-1A Current Range Control
- Step to 0-200 Times

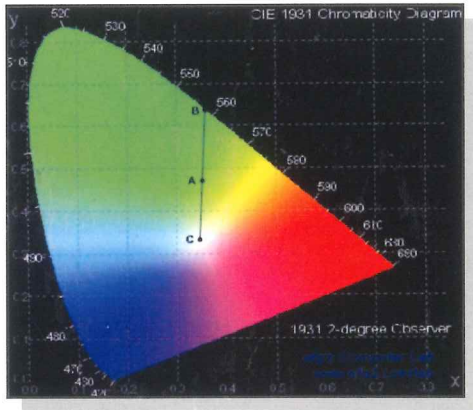
■ Test data



- Easy to save and read for output data and graph.
- Save file convert to excel file

SPECIFICATION

■ CIE Chart & Dominant Wavelength



CIE 1931 (CIE 1976 u' , v' coordinates)

- C: White Point($x=1/3$, $y=1/3$)
- B: Dominant Wavelength
- A: Mixture of B and white
- AC/BC: Excitation Purity of A

1. OPTICAL ANALYZER

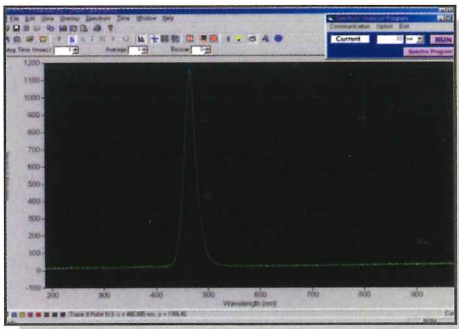
- Spectrometer
 - Range : 185~1100nm
 - Resolution : 1.0nm
- Light Intensity Meter
 - Range : 0.01~30 cd

2. I-V ANALYZER

- Forward Current(I_F): \pm (500nA~1A)
- Reverse Current(I_R): \pm (500nA~1A)
- Forward Voltage(V_F): \pm (20V)
- Reverse Voltage(V_R): \pm (20V)

3. PROBE STATION(EPS-1000)

■ Spectrum analysis



- Synchronous Spectrum Analysis
- Time series acquisition function



- ADDRESS: 7TH FLOOR GYEONGDO BLDG, 986-18 HOGYE-DONG, DONGAN-GU, ANYANG-CITY, GYEONGGI-DO, SOUTH KOREA, 431-841
- TEL: +82-31-389-1999 • FAX: +82-31-389-1996 or +82-31-427-8964
- WEBSITE: www.ecopia21.co.kr • E-MAIL: lgt111@ecopia21.co.kr, andy lee@ecopia21.co.kr